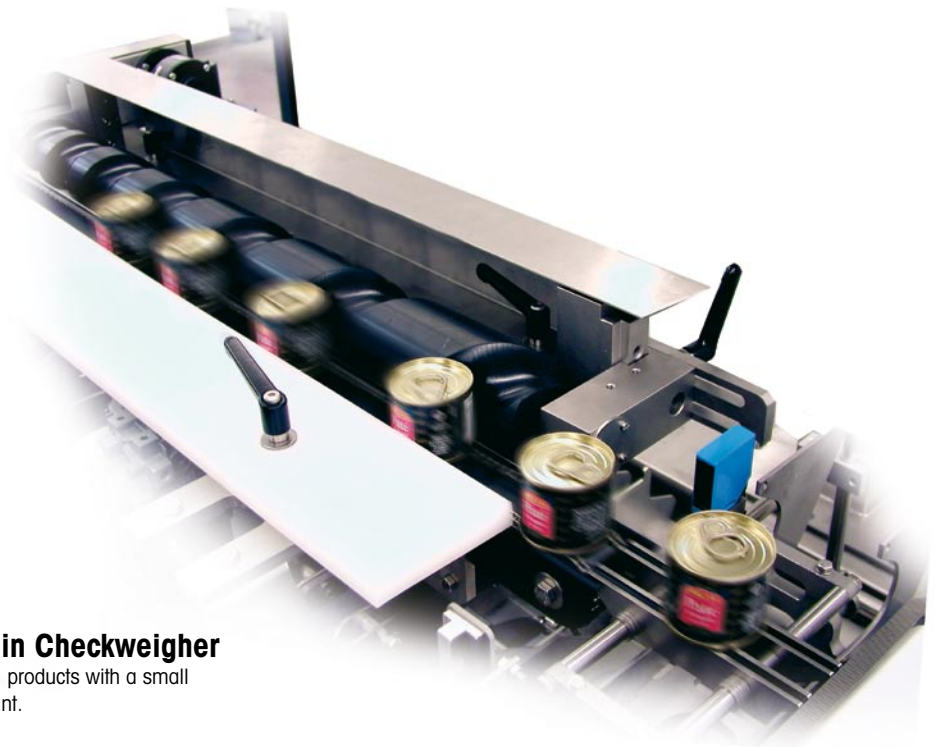


The chain checkweigher

Clean solution for difficult cases



Chain Checkweigher
for tall products with a small footprint.



XS weighing terminal
of the chain checkweigher variant "high-performance chain checkweigher". The large 15" colour touch screen ensures best visibility and facilitates operation.



"High performance chain checkweigher"
amazing throughput rates
– up to 1 000 weighings per minute.

Dynamic weighing at high throughput in harsh production environment

– that's the job for the GARVENS chain checkweigher. Even tall products are conveyed safely and fast on chains: reliable, hygienic, safe.

The "easy access" design simplifies the cleaning process, making the chain checkweigher ideally suitable for use in wet environments where high demands on hygiene must be met (e. g. weighing of open cans in the food processing industry).

Technical data

chain checkweigher

– for optimum production flow and maximum hygiene

The GARVENS chain checkweighers are your first choice for difficult applications. Chain checkweighers excel in dynamic weighing of difficult-to-handle products (e.g. bottles, cans). The chain checkweigher ensures that even tall products with a small 'footprint' are transported quickly and gently over the checkweigher.

GARVENS chain checkweighers are of robust design. State-of-the-art weighing technology, water ingress protection and stainless steel parts ensure trouble-free operation under harsh production conditions. Product changeover is simple and easy.

Various options and accessories for product transport ensure optimum product infeed and outfeed: e.g. side-grip belts, infeed star-wheel or timing screws for different product shapes and diameters. The wide range of options and accessories allows for technical solutions that exactly meet the application requirements.

Weighing terminals

Various weighing terminals can be teamed with the chain checkweigher, ranging from simple models for simple tasks (weight indication, reject and data transmission) to more sophisticated units including statistics package, larger database and many control and data monitoring options, e.g.: multiple weight classifications and rejection, feedback control of fillers, integration into data networks. Special software solutions and many other functions are available.

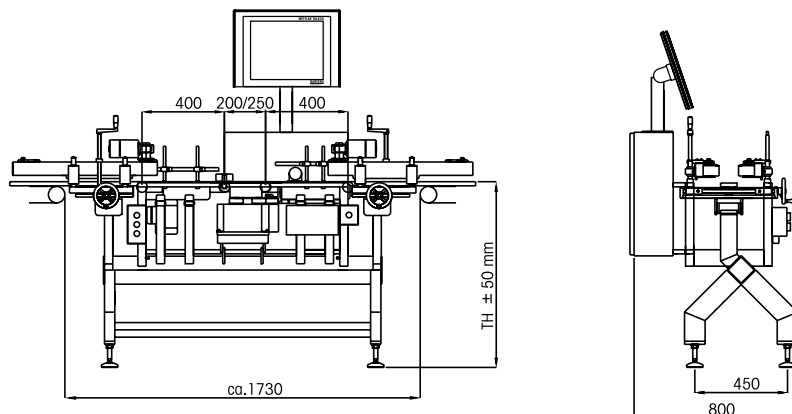
Options and accessories

- side-grip belts
- various infeed starwheel units for differing product sizes
- infeed timing screw with protective cover, additional screw sets for other sizes
- additional infeed conveyors (various dimensions available)
- light barriers for monitoring product backup
- cover (guard) on the weighing area for protection from draughts and compliance with Safety and Health regulations
- emergency stop push-button
- swing gate or air jet instead of pneumatic pusher or as additional rejecting devices

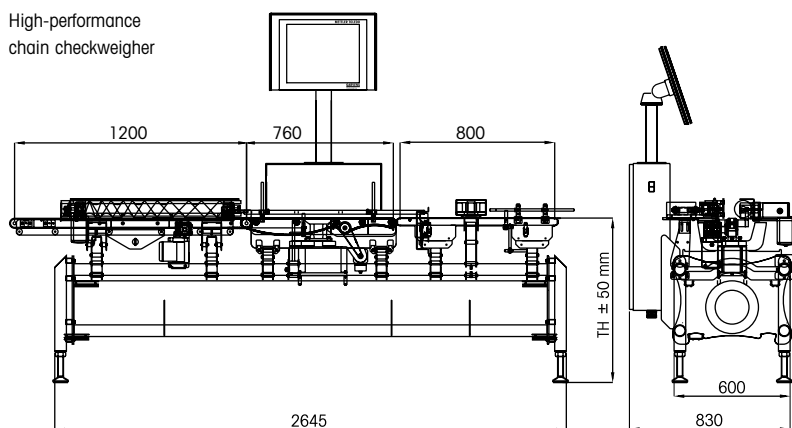
Special designs and accessories on enquiry.

Schematic – typical dimensions, in mm

Chain checkweigher (version with side-grip belts for the infeed/outfeed of products)



High-performance chain checkweigher



| Technical data | Chain checkweigher | High-performance chain checkweigher |
|--------------------------------|---|---|
| Weighing range | 10 - 3 000 g (designs for loads beyond 3 000 g on enquiry) | 10 - 3 000 g (designs for loads beyond 3 000 g on enquiry) |
| Throughput (weighings/minute)* | max. 250 | max. 1 000 |
| Accuracy** | from ± 300 mg | from ± 1 to 2 g |
| Direction of transport | left to right or right to left | left to right or right to left |
| Design | full stainless steel version (except the drive system and infeed screw) | full stainless steel version (except the drive system and infeed screw) |
| Drive system*** | three-phase motors, wear-resistant | electronically commuted D.C. motors, wear-resistant |
| Line height (TH) | 850 ± 50 mm; optional: line heights from 750 to 1 000 mm | 850 ± 50 mm; optional: line heights from 750 to 1 000 mm |
| Standard rejecting device | pneumatic pusher | high-performance pusher |
| Ingress protection | IP 65 | IP65, on enquiry: IP69K |
| Electrical ratings **** | 230 V (A.C.), 50 Hz, single-phase | 230 V (A.C.), 50 Hz, single-phase |
| Compressed air supply | 6 bars | 6 bars |

* depending on weight, dimensions and transport behaviour of the products

** depending on throughput, weight, dimensions and transport behaviour

*** continuously variable speed

**** designs for other voltages on enquiry

nefton
 Ζύγιση
 Σήμανση
 Συμμόρφωση

Νέων Τεχνολογιών ABEE

Γέρακα 113, Τ.Θ. 67934

15344 Γέρακας

Τηλ: 210 6654544

Fax: 210 6654545

marketing@nefton.gr

www.nefton.gr

www.mt.com/garvens

For more information